



L'ARCHITRAVE IMMOBILIARE
The key to your home in Italy

CASA TAMARA

Tuscany, Lunigiana, Fivizzano

€ 115,000



Bedrooms: 2

Terrace Yes

Land: 567 SQM

Floor Area: 135 SQM

Within 1 hour Of an airport: Yes

Close To amenities

EPC:



Charming property set in the heart of a character village in the hills above Fivizzano.

A short walk through the village leads to the property.

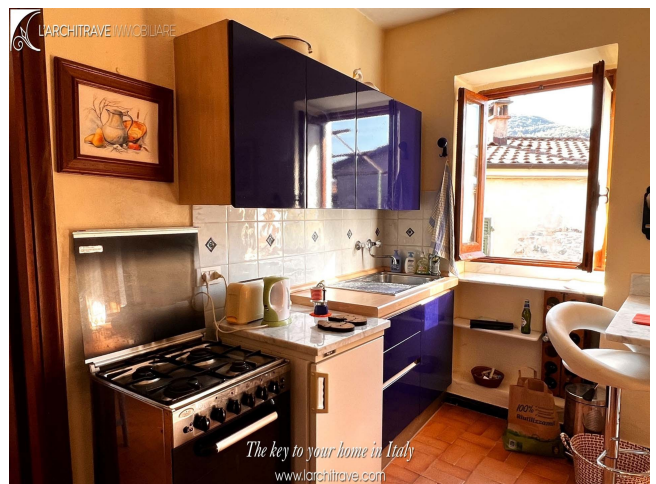
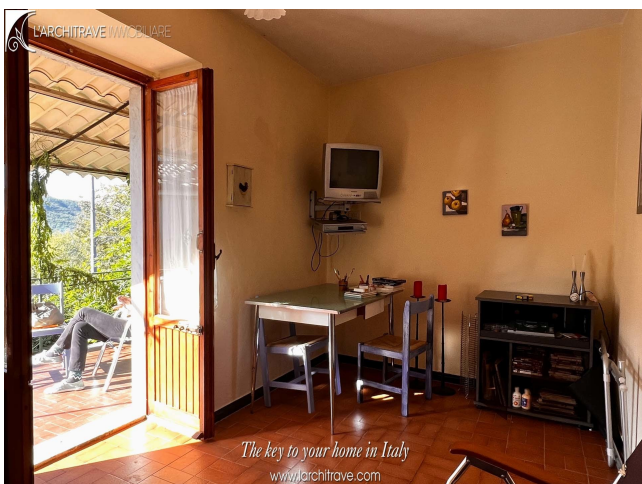
Access is from a terrace with views, into an open plan living room-kitchen, two bedrooms and bathroom. There is a cantina on the ground floor for storage.

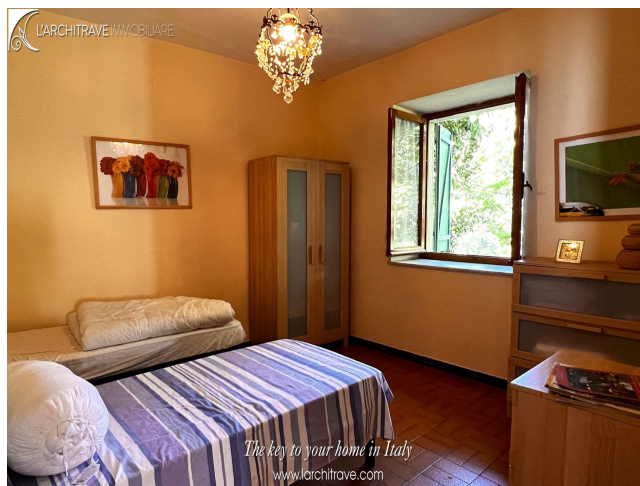
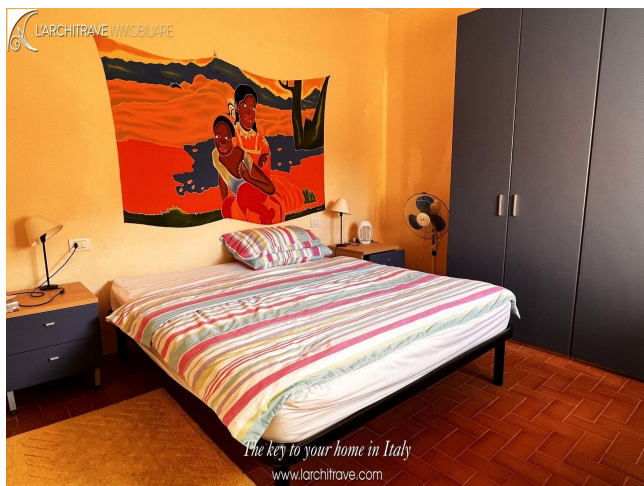
The village is in a lovely spot, full of sunshine and with views all the way down the valley, with the pretty town of Fivizzano just a few minutes drive away. The area is well known for walking, with hiking trails all around. Heading further up the mountain is the little ski resort of Cerreto Laghi, perfect for skiing in Winter, and hiking in Summer. This village is a unique location where it is perfectly possible to ski in the morning then head down to the coast for a dip in the sea in the afternoon. All on your doorstep.

Fivizzano is a medieval walled town with a central cobbled piazza and it is often referred to as the Florence of Lunigiana. The bustling town hosts many cultural events over the summer with concerts in the piazza and reenactments of medieval parades. With its musical heritage the town also attracts international musicians during the annual folk music festival. There is a hospital, shops, supermarkets and restaurants in the pretty town.

Lunigiana is a magical part of Tuscany. The rolling landscape is liberally sprinkled with castles of Medici or Malaspina vintage and for lovers of the coast the sea is only half-an-hours' drive away. The golden sandy beaches around Lerici and the pebble coves of the Cinque Terre are ideal for swimming and sailing. The area is criss-crossed with marked footpaths for walks to the hills and mountains and the views are stunning. The airports of Pisa, Parma and Genova are all just over an hour away.

Fivizzano (shops, supermarkets, restaurants) 5 km, Aulla (autostrada) 20 kms, Cerreto Laghi (skiing) 14 km, Lerici (beaches) 40 km, Cinque Terre (UNESCO WH site) 50 km, Lucca 90 km, Pisa (airport) 100 km.





L'Architrave Immobiliare Unipersonale srl

Via Montebello 20, Licciana Nardi 54016 Massa Carrara, Tuscany, Italy
(+39) 0187 475543 - info@larchitrave.com