

CASA DIEGO

Tuscany, Lunigiana, Licciana Nardi

€ 120,000



Bedrooms: 3

Garden : 150 SQM

Floor Area: 148 SQM

Within 1 hour Of an airport: Yes

Close To amenities

EPC: 

Restored apartment with garden set in the small medieval town with amenities.

The property has an entrance hall leading to a large living room, three bedrooms and two bathrooms (one of the bedrooms and bathroom require finishing work). There is also a cantina store on the ground floor.

The garden has a built in barbecue and fruit trees. There are lovely views.

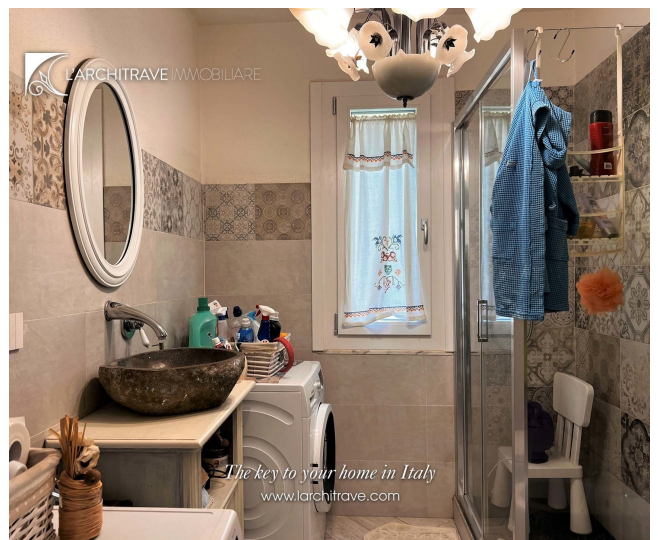
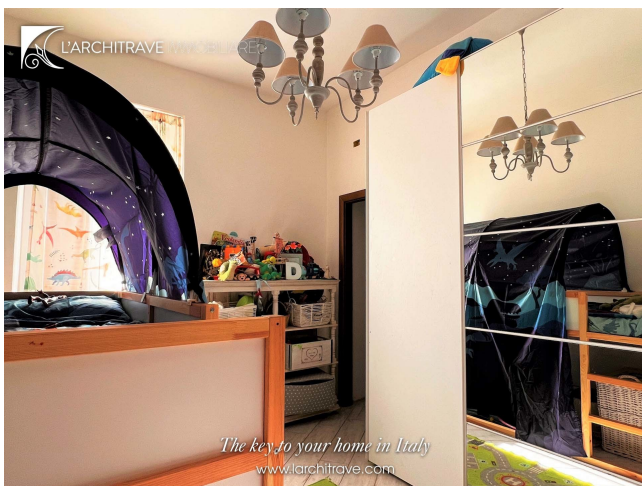
Complete with central heating and presented in good order. Shops and amenities are within walking distance.

Licciana Nardi is a town in the Taverone valley with 13th century pedestrian street flanked with local shops. Central in the town is the Piazza del Municipio which hosts the 16th century Malaspina castle and many festivals such as the Chestnut Festival in the autumn. The castle is linked to the baroque church by a covered bridge so that the nobles had direct access to prayer and dealings with the local priest. There are also a bank, schools, restaurants and medical facilities. The nearby village of Monti has a castle on the hill above and offers a good selection of amenities.

Lunigiana is a magical part of Tuscany. The hills that encircle Lunigiana create an intimate and relaxed atmosphere whilst the blend of the mountains and sea are extremely inviting to those who enjoy the outdoors. The rolling landscape is liberally sprinkled with castles of Medici or Malaspina vintage and for lovers of the coast the sea is only half-an-hour away. The golden sandy beaches around Lerici and the pebble coves of the Cinque Terre are ideal for swimming and sailing. The area is criss-crossed with marked footpaths for walks to the hills and mountains. The airports of Pisa, Parma and Genova are all just over an hour away.

Distances: Licciana Nardi (shops, cafes etc) on the doorstep, Aulla (autostrada, supermarkets, trains) 9 km, Lerici (beaches) 30 km, Cinque Terre 45 km, Pisa (airport) 90 km, Florence 150 km.





L'Architrave Immobiliare Unipersonale srl

Via Montebello 20, Licciana Nardi 54016 Massa Carrara, Tuscany, Italy
(+39) 0187 475543 - info@larchitrave.com