



L'ARCHITRAVE IMMOBILIARE
The key to your home in Italy

IL BERGAMOTTO

Liguria, La Spezia, La Spezia

€ 350,000



Bedrooms: 3

Garden : 600 SQM

Terrace : 110 SQM

Floor Area: 220 SQM

Within 1 hour Of an airport: Yes

Close To amenities

EPC:



Bright apartment on the first floor with sea views and garden, olive grove and roof terrace. The property is set at the edge of a village with good selection of shops. Just 3 km from beaches. The accommodation is all on one level and forms the upper level of a well-maintained building and it is accessed by an external staircase to a courtyard with the front door.

There is a main entrance to a hall with a few steps to the main accommodation comprising a living room, kitchen/dining room, three bedrooms (two with double doors opening onto a terrace with sea views). A steep outdoor staircase leads to the very large roof terrace (110 sqm) above with stunning views. A garden and olive grove (300 sqm) completes this property. Connected to main services and with central heating.

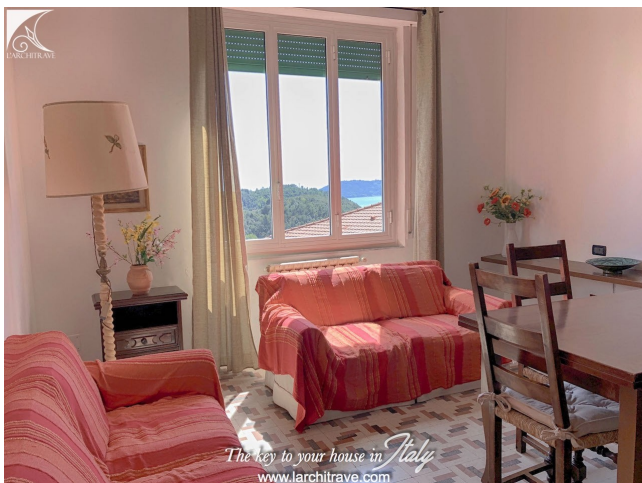
There are shops, cafes and restaurant in the village within walking distance and the beaches are just 3 km away. There is public transport with a bus stop close to the property. Set between the town of La Spezia and the enchanting villages of the Gulf of the Poets.

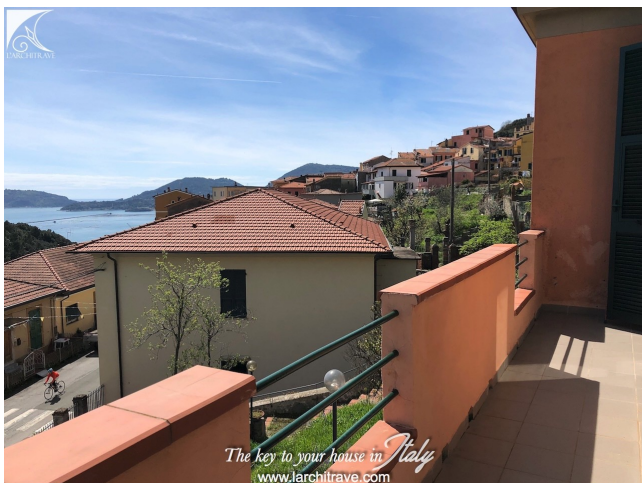
The Gulf of the Poets is an enclave with a group of three islands at its tip, with fishing villages with exceptional fish restaurants, as well as opportunities for sailing, canoeing, snorkelling or just relaxing on one of the beaches hidden in craggy bays around Fiascherino or Tellaro. The easiest way to get around the gulf is by boat which runs between Lerici, La Spezia and Portovenere or on to The Cinque Terre (UNESCO World Heritage site). The name Gulf of the Poets is from the literary connection as some of the world's most famous poets including Shelley, Byron and D H Lawrence lived here at some time.

Portovenere is a picture postcard old fishing town, dominated by a castle on the hill and the Church of San Giorgio on the tip of the promontory. The tall, narrow, pastel coloured houses with traditional green shutters line the seafront and the narrow, cobbled streets, with excellent restaurants and interesting craft stalls. Just around the bay are the Cinque Terre, (five villages) which is a UNESCO World Heritage Site. Boats run from Portovenere to the Cinque Terre and to Lerici in the Gulf of the Poets. Sailing is a favourite pastime in the area and crewed or skippered yachts are available for hire.

The Cinque Terre is a string of five fishing villages perched high on the Italian Riviera (in Liguria) which until recently were linked by mule tracks and accessible only by rail or water. An ancient system of footpaths is still the best way to visit the five villages: Monterosso, Vernazza, Corniglia, Manarola and Riomaggiore. The Cinque Terre are noted for their beauty. Over centuries, people have carefully built terraces to cultivate grapes and olives on the rugged, steep landscape right up to the cliffs which overlook the Mediterranean Sea. The breathtaking views of harbours far below and rugged coastline, together with the medieval fortresses and plentiful vines and vibrant colours make this a very special place to enjoy. The Cinque Terre, recognised in 1997 as a UNESCO World Heritage site, are today a National Park and Protected Marine Area with the aim of protecting this great cultural heritage and natural environment.

Distances : Baia Blu (beaches) 3 km, La Spezia (autostrada, trains) 5 km, Riomaggiore (Cinque Terre) 20 km, Portovenere 20 km, Viareggio 50 km, Lucca 60 km, Portofino 80 km, Pisa (airport) 70 km, Genova (airport) 110km.







L'Architrave Immobiliare Unipersonale srl

Via Montebello 20, Licciana Nardi 54016 Massa Carrara, Tuscany, Italy
(+39) 0187 475543 - info@larchitrave.com